

**NW/KF FLANGE CLAMP + CENTERING O-RINGS WITH FLUORINE RUBBER****\$3.99 – \$19.99**Web: <https://www.labideal.com>Email: [info@labideal.com](mailto:info@labideal.com)**SKU:** 400826 | **Categories:** [Fittings and Flanges](#), [KF to KF Fittings](#), [Gaskets](#), [Viton Rubber](#), [Clamps And Centering Rings](#), [Vacuum Components](#), [O Ring Gasket ASA VITON](#)

## PRODUCT DESCRIPTION

### Features:

- 1.Brand New NW/KF Clamps with centering O-rings (FKM / Viton).
- 2.Easy to clamp and secure tight.
- 3.This clamp is used for connecting standard NW/KF vacuum components.
- 4.Made of High Quality Stainless steel so it will not bend & ensure a tight fit.
- 5.Stainless steel Wing Nut Flange Quick Clamp for Degassing Chamber, Vacuum Oven, Vent Lines, etc.

### Low price with high quality!

With our competitive pricing and finishing time, we are confident that we can underbid other online/offline scientific vacuum instruments vendors.

KF Flange are commonly used to build foreline vacuum plumbing and process systems.

They are often called quick flange fittings because they are quick to assemble.

A circumferential clamp and centering ring form the vacuum seal between the connecting flanges.

The centering ring contains a rubber elastomer o-ring.

The standard sizes for quick flange fittings are KF-10, KF-16, KF-25, KF-40, and KF-50 with flange sizes NW-10, NW-16, NW-25, NW-40, and NW-50, respectively.

### Specifications:

NW/KF Clamps with Centering O-rings

Stainless Steel

Vacuum Part

## VARIATIONS

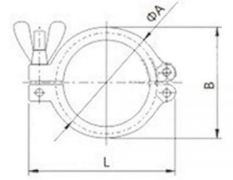
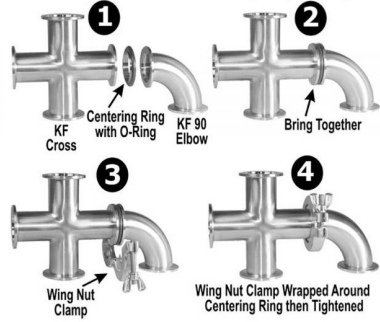
Image	SKU	Price	Description	Flange Size	Clamp Material
	400826	<del>\$33.99</del> \$19.99		KF50	Aluminum
	400826	<del>\$29.99</del> \$3.99		KF10	304 Stainless Steel
	400826	<del>\$30.99</del> \$4.99		KF16	304 Stainless Steel
	400826	<del>\$31.99</del> \$17.99		KF16	Aluminum
	400826	<del>\$31.99</del> \$17.99		KF25	304 Stainless Steel

Image	SKU	Price	Description	Flange Size	Clamp Material
	400826	<b>Call for Price</b>		KF25	Aluminum
	400826	<del>\$32.99</del> <u>\$18.99</u>		KF40	304 Stainless Steel
	400826	<del>\$32.99</del> <u>\$18.99</u>		KF40	Aluminum
	400826	<del>\$33.99</del> <u>\$19.99</u>		KF50	304 Stainless Steel
	400826	<del>\$30.99</del> <u>\$16.99</u>		KF10	Aluminum

## GALLERY IMAGES



### How to Connect ISO KF (NW) Flanges



Size (mm)	A	B	L
KF16	35	45	62
KF25	45	55	73
KF40	60	70	90
KF50	80	96	123